

GENERAL:

The types of sewage systems the Lost Lake community uses are both the septic and a central system. Most of the houses on the West side of the lake use a pressured central system that goes to a wastewater plant for processing. If the central system is available to the lot the owner must utilize it.

Central sewer can generally be divided as a gravity flow system or a pressure flow system. A gravity flow system uses large concrete pipes that are placed underground with a slop that they naturally drain to the sewage facility. The other system each user has a grinder pump in a basin that chops the sewage up and pumps the slurry to a small diameter pipe to the wastewater plant.

Initial costs in a gravity drain system are substantially higher than a pressure flow system. The downside of a pressurized system is the cost of the grinder pump system and the eventual cost of repair and replacement of the grinder pump.

Lost Lake was initially exclusively an E One pressurized system. All the homes that attached to it had an indoor or outdoor E One grinder pump station. It included a grinder pump in a basin with a switch and control panel and failure alarms.



Though the E One system is of the highest quality, the cost of replacing and repairing the pumps is very costly. The fact that only one company can be used for this work has lead to user complaints.

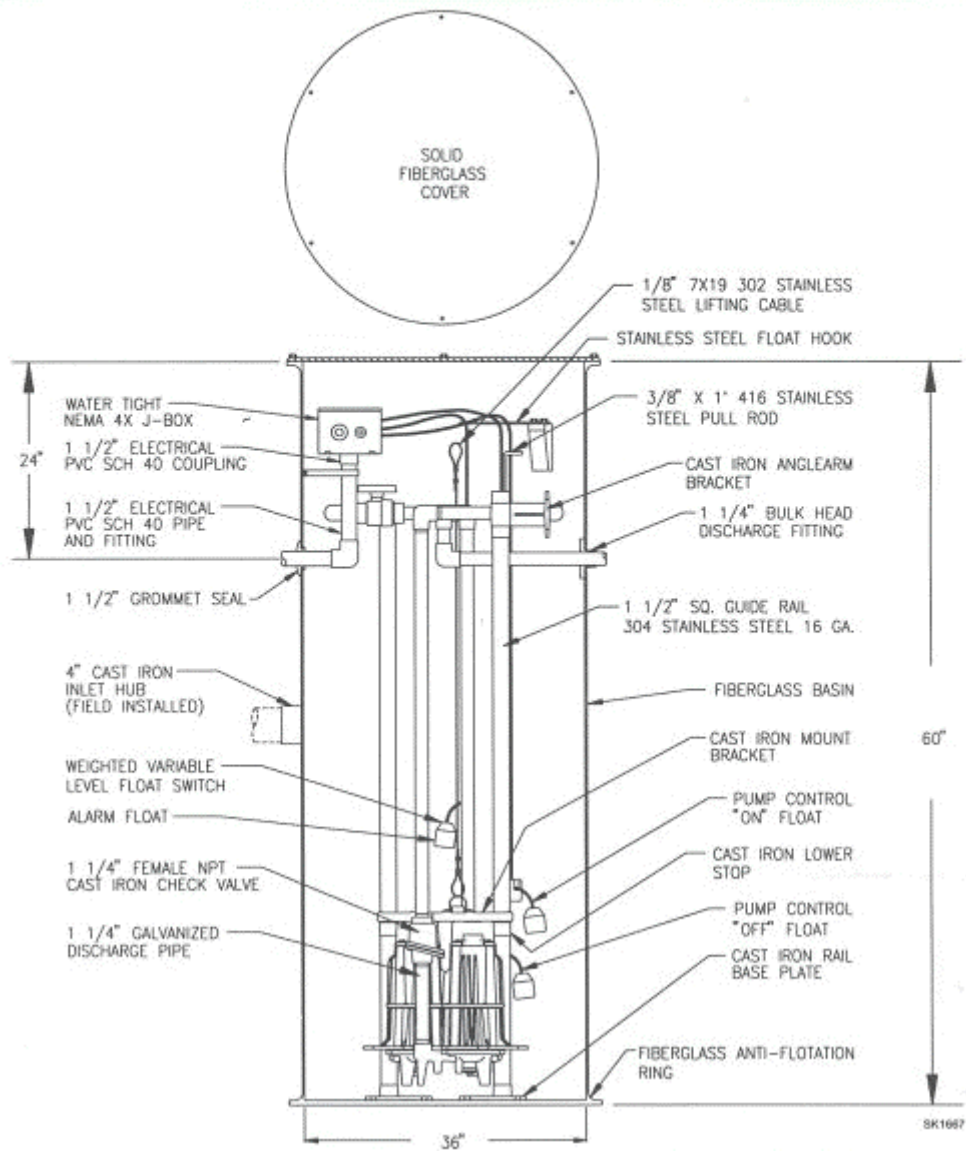
NEW CONSTRUCTION:

For all new construction any of a number of grinder pump systems are allowed to hook up to the Lost Lake wastewater system. E One, Gould Pumps, Little Giant, Zoeller, and Hydromatic to name a few offer grinder pump package systems to fit the requirements of the Lost Lake Utility District system. These systems can be chosen by anticipated sewage generation, power available and other characteristics that the owner may desire.

One of most significant options of the grinder packages is if the system is a simplex or duplex configured. Simplex systems offer one sewage pump. If it fails the entire house waste water system is nonfunctional until it can be fixed. This can lead to difficulties during holidays and weekends at getting service or premium time expenses. The other option is a duplex system, though it costs more initially. It has two pumps with a pump in standby in the case one fails. Then the failed pump can be fixed at the owner's leisure. This allows for a more economical ability of getting the down pump repaired and eliminates the anxiety of no ability to shower, flush or even use the sink.

DUPLEX GRINDER SYSTEM

OUTDOOR PREPACKAGED WITH SQUARE GUIDE RAIL SYSTEM



EXISTING SYSTEMS:

If your grinder pump goes down, you will generally be notified by a failure alarm that usually is a loud buzzing sound coming from the control panel. This is activated by the high level alarm from the basin. The alarm is notifying you that the pump is not pumping and the basin is filling up. Anymore activity of the home sewage system could lead to the basin filling full of waste water and / or overflowing in your home.

If you have an E One system you have some options. Schmidt Plumbing is the only authorized local representative that can work on the E One system. They can be reached at 815-284-2044.

If you choose *not* to use Schmidt Plumbing on your E One system, any licensed Plumber can modify the system for another brand grinder pump or replace the entire basin with another competitive system. Little Giant makes a pump that they claim is 100% compatible with the E One system. Lost Lake Utility District does not guarantee this. If you desire to take this option you can call Little Giant Company with your pump's specifications and they can confirm compatibility. The Little Giant pump sells for significantly less than an E One pump. The Little Giant Company can be reached at 405-947-2511. Keep in mind that this pump will take some days before arriving.

A third option is to buy a grinder pump from another source and have a plumber install it in your system. Keep in mind the voltage available and the tight working conditions in the basin. Moreover, the E One pump is quite heavy and requires a lifting system to safely get it out of the basin.

If you decide to buy a Little Giant Pump the Lost Lake Utility District has a discount with Grainger and we may be able to get it to you at a lower price than you may otherwise be able to.

A final option is buying an E One Pump directly from E One. Lost Lake Utility District has arranged for this service at a significant discount. Once again it will take some days before your pump comes in and a qualified individual must install it.

Schmidt Plumbing, other plumbers or LLUD can address any other questions you have about your grinder system.